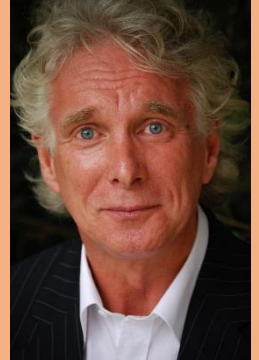


APEX Seminar Series

Professor David Thompson

Professor of Nursing, Queen's University
Belfast



Psychosocial interventions in cardiovascular disease

Psychosocial issues are increasingly important for patients, families and carers in terms of health outcomes and ill-health causes, but are comparatively under-researched and poorly addressed. Psychosocial factors such as depression, anxiety, stress and social isolation increase the risk of cardiovascular events, inhibit resumption of normal activities and adherence to treatments, attenuate healthcare costs and diminish quality of life and well-being.

27 June 2018

Time: 10.30-11.30

Venue: Room JS07, Smeall Building, St Luke's Campus (there will be video conferencing to F083 Knowledge Spa)

Join us afterwards for our informal monthly APEX meeting: updates on progress in APEX and networking (refreshments will be served)

Email: j.l.Choules@exeter.ac.uk to book your place
For further information visit: www.exeter.ac.uk/medicine/apex/seminars